

OPERATING MANUAL



For the boiler models:

ELECTRO

AIR

FLOW

AIR / FLOW

TOWER

PUNDMANN is a brand of:

CMPNY ONE Sp. z o.o.
Bytomská 49

42-674 Karchowice, PL

contact@cmpnyone.de www.pundmann.de

1 Content

1	Method of use.....	5
2	Documentation Information	5
2.1	Symbolism.....	5
2.2	LIABILITY AND WARRANTY	5
2.3	DECLARATIONS.....	6
3	Security policy	6
3.1	GENERAL SAFETY RULES	6
3.2	SPECIAL SAFETY RULES FOR THE BOILER.....	6
3.3	Use.....	7
4	TRANSPORT AND PACKAGING	7
4.1	TRANSPORT	7
4.2	PACKAGING	8
5	SPECIFICATIONS.....	9
5.1	DESCRIPTION AND DIMENSIONS.....	9
5.1.1	PUNDMANN ELECTRO	9
5.1.2	PUNDMANN AIR.....	2
5.1.3	PUNDMANN FLOW, AIR & FLOW.....	2
5.1.4	PUNDMANN TOWER	2
6	Electrical connection.....	3
6.1	DC/ DC.....	3
6.2	AC/ AC voltage	3
6.3	Connection example PUNDMANN boilerCONTROL.....	3
7	Installation instructions	4

7.1	Installation position.....	4
7.2	Overpressure protection, safety valve.....	4
7.3	Connection	5
7.4	Commissioning.....	5
7.5	Electric heating function	5
7.6	Water heating via parking heater.....	6
7.7	Heating by means of engine coolant	6
7.8	EMPTYING THE BOILER	6
8	Accessories	7
9	Guarantee	7

1 Method of use

Thank you very much for choosing a Pundmann product.

THERM boilers have been developed and built for use in the mobile sector.

2 Documentation Information




This manual describes the installation and use of the boiler and serves as a source of information during operation.

Knowledge of all the information and safety instructions contained therein is a prerequisite for safe and long-term use of the device.

In addition, the local and general safety regulations that apply in the area where the device is used must be observed.

The instruction manual is included with the equipment and should be kept near the boiler.

2.1 Symbolism

 WARNING	This icon indicates information that, if ignored, can cause the device to malfunction and/or fail.
 Remark	points out information that, if not observed, could lead to an accident and/or injury to the user. Be extra careful.
 TIP	points out the guidelines and information to be followed to ensure efficient and trouble-free operation of the device.

2.2 LIABILITY AND WARRANTY

All the information and tips contained in this guide have been developed in accordance with the regulations in force and our knowledge.

In the event of special orders or missing components on the market, the scope of services may change.

If you have any questions, please contact the manufacturer.



TIP

Please read this document before using the boiler for the first time.

The manufacturer is not liable for any damage caused by failure to follow the instructions. The instructions should always be close to the boiler. We reserve the right to further develop the product and make technical changes as part of the performance improvement.

2.3 DECLARATIONS

The PUNDMANN THERM boiler is manufactured in accordance with the following European standards: EN13445:2014; EN 60335-1; EN 60335-2-21; EN 55014; DVGW W270 Worksheet; KTW guidelines.

3 Security policy

This chapter provides an overview of security issues. Protect yourself and your boiler.

3.1 GENERAL SAFETY RULES

The device is manufactured in accordance with the applicable directives and standards on the basis of the relevant calculations. The user is prohibited from making any changes to the device, except those that have been accepted by the dealer or the manufacturer.

3.2 SPECIAL SAFETY RULES FOR THE BOILER

The information on the safety of boiler operation refers to the European Union directives in force at the time of manufacture of the device.



WARNING

The boiler is not intended for any application other than that specified in this manual. The manufacturer and/or his authorized representative are not liable for damage caused by improper use of the device.

Damage caused by improper use is the sole responsibility of the user.

3.3 Use

The boiler is only used for water heating. The water temperature can be controlled with additional devices, sensors and suitable accessories.



WARNING

The boiler must not be operated without first reading these instructions and minors. It is necessary to read the instructions before installing and using them.

4 TRANSPORT AND PACKAGING

4.1 TRANSPORT

Shipments should be reviewed as soon as they are received. It is necessary to check the completeness and to check for possible defects and/or transport damage.

In the event of externally visible transport damage, the delivery will not be carried out or

accepted with reservations. The extent and nature of the damage should be described in the shipping documents/complaint log of the carrier and a complaint should be filed.

After you have found a defect, you should file a complaint immediately. The time of filing a complaint is important.

4.2 PACKAGING



TIP

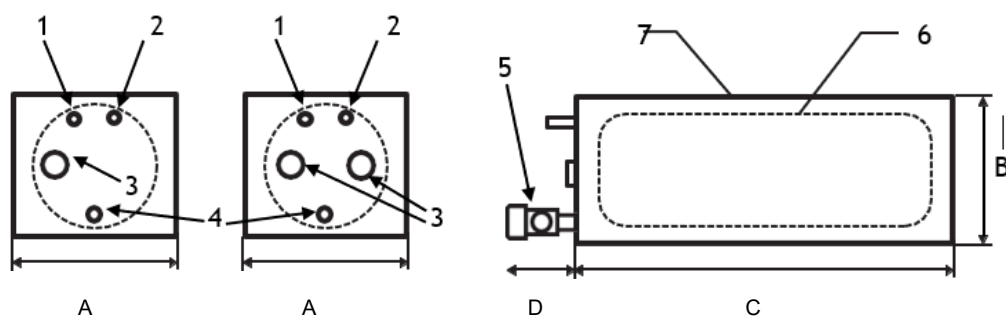
Do not dispose of the device packaging. You may need it for storage or return shipping in case of a complaint or return.

If you wish to dispose of the packaging, please refer to the legal requirements applicable in your country.

5 SPECIFICATIONS

5.1 DESCRIPTION AND DIMENSIONS

5.1.1 PUNDMANN ELECTRO



1. Cold water

2. Hot water

3. 3/4" sleeve for electric heater

4. 1/2" drain/safety valve connection

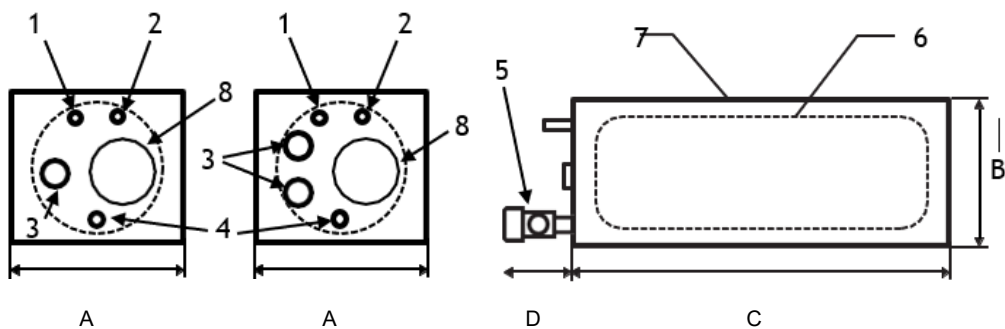
5. Safety valve

6. Stainless steel boiler

7. Insulation

Capacity [Liter]	Dimensions [mm]:				Material des Tanks	Insulating material	Working pressure	Connection type
	One	B	C	D				
3	228	200	220	90	AISI 304/316	EPP	2.3 bar	Φ10/JG
6	228	200	370	90				
9	228	200	500	90				
15	228	200	780	90				

5.1.2 PUNDMANN AIR



1. Cold water

2. Hot water

3. 3/4" sleeve for electric heater

4. 1/2" drain/safety valve connection
5. Safety valve

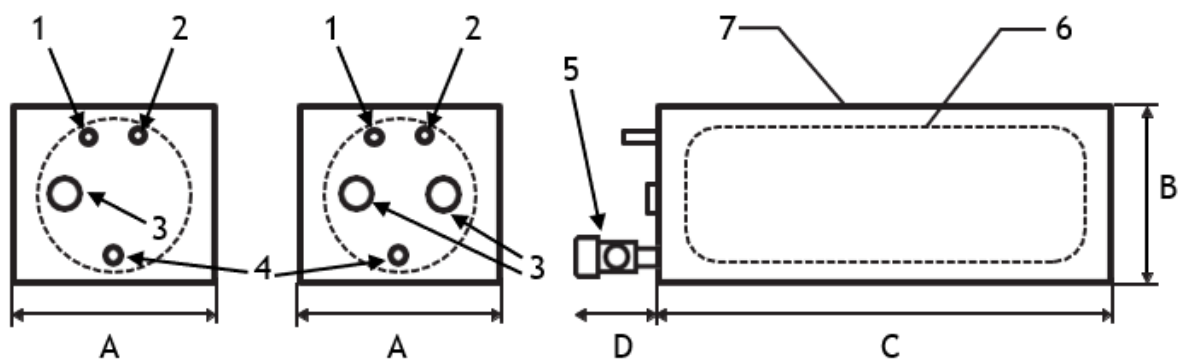
6. Stainless steel boiler

7. Insulation

8. Hot air feedthrough

Capacity in litres	Dimensions [mm]:				Material des Tanks	Insulating material	Working pressure	Connection type
	A	B	C	D				
3	228	200	230	90	AISI 304/316	EPP	2.3 bar	Φ10/JG
6	228	200	378	90				
9	228	200	517	90				
15	228	200	840	90				

5.1.3 PUNDMANN FLOW, AIR & FLOW



1. Cold water

2. Hot water

3. 3/4" sleeve for electric heater

4. 1/2" drain/safety valve connection

5. Safety valve

6. Stainless steel boiler

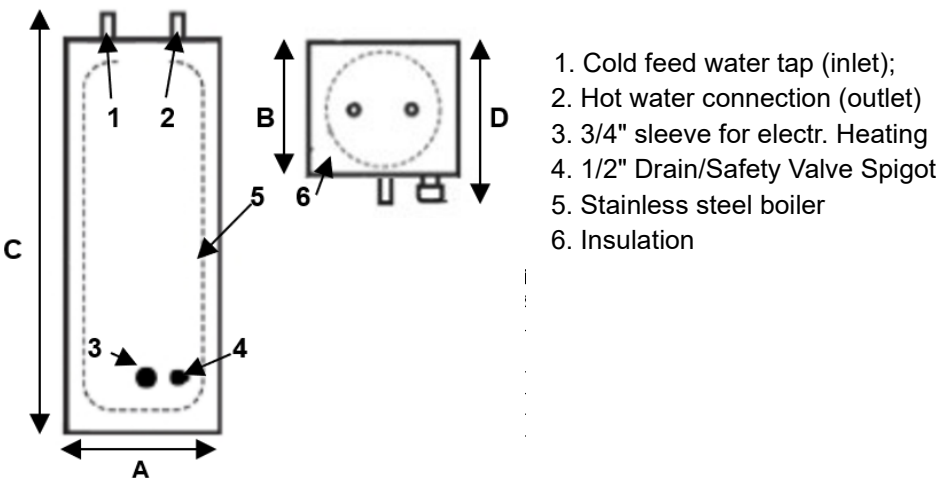
7. EPP insulation

8. Hot air channel;

9. Inlet/outlet of the heating medium (e.g. coolant connection or underfloor heating)

Capacity in litres	Dimensions [mm]:				Boiler material	Insulating material	Operation pressure	Connections
	A	B	C	D				
6	260	260	230	85	AISI 304/316	EPP	6,0 bar	1/2"
6 *	260	260	230	85				
9	260	260	310	85				
10 *	260	260	355	85				
20	260	260	620	85				
20 *	260	260	620	85				
30	260	260	920	85				
40	260	260	1200	85				
50	260	260	1450	85				

5.1.4 PUNDMANN TOWER



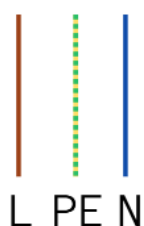
Capacity in litres	Dimensions [mm]:				Material des Tanks	Insulating material	Working pressure	Connection type
	A	B	C	D	AISI 304/316	EPP	2.3 bar	Φ10/JG
6	228	200	410	280				
9	228	200	550	280				

6 Electrical connection

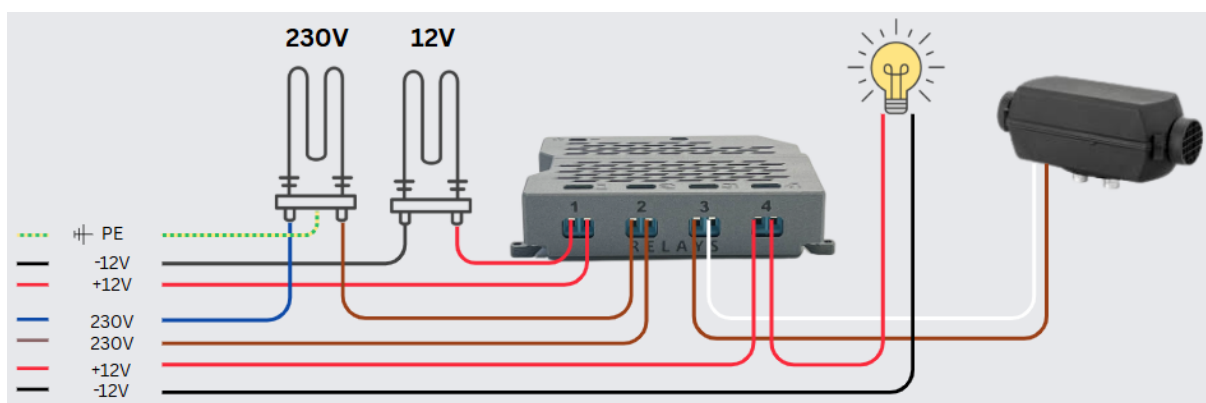
6.1 DC/ DC



6.2 AC/ AC voltage



6.3 Connection example PUNDMANN boilerCONTROL



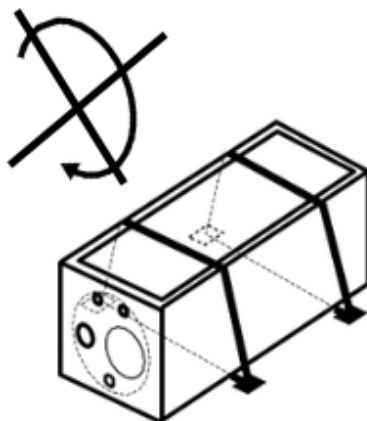
You can find more information about the Pundmann boilerCONTROL at <https://manuals.pundmann.de/>



7 Installation instructions

7.1 Installation position

The boiler should only be mounted horizontally (except for the Pundmann Tower model) and in such a position that the drain/safety valve is at the bottom.



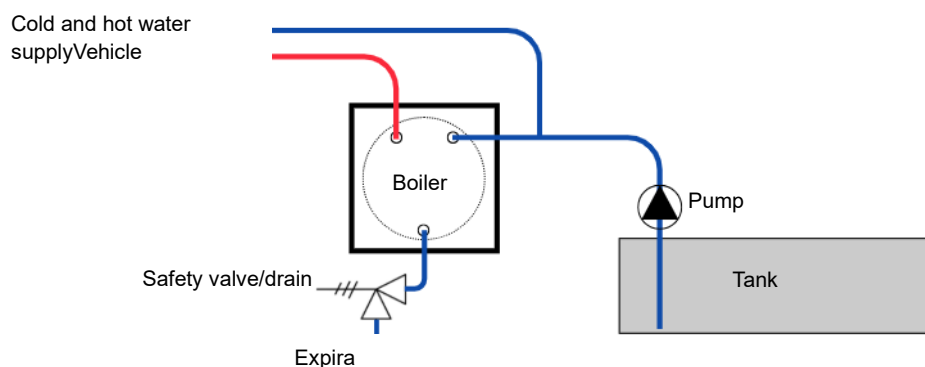
The boiler is installed with the cable ties included in the set (2 pieces) and mounting brackets with a hole of Ø5 mm (4 pieces).

7.2 Overpressure protection, safety valve

The boiler is equipped with a safety valve as standard. A water drain pipe can be connected to the safety valve in order to drain the escaping water (or steam) in a targeted manner in the event of a trip. The valve has a factory setting that cannot be changed. The value of its setting is located on the button and depends on the type of boiler. The operating pressure value is indicated on the boiler's nameplate and must not be exceeded. If necessary, reduce the water pressure on the pump or, with the help of a pressure regulator, which is available in the PUNNDMANN accessories.

7.3 Connection

Thanks to their universal design, the water connections allow the use of flexible hoses with an inner diameter of 10 mm, or with quick couplings from well-known manufacturers such as John Guest. Regardless of the type, the fittings and pipes to be connected should be able to withstand a pressure of at least the opening pressure of the safety valve of the boiler used and be resistant to temperature fluctuations, vibrations, shocks, corrosion and changing weather conditions.



WARNING

Water heated to operating temperature must be mixed with cold water. The thermostatic Pundmann temperature limiter is ideal for this purpose.

Please be sure to note, otherwise there may be a risk of scalding!

7.4 Commissioning

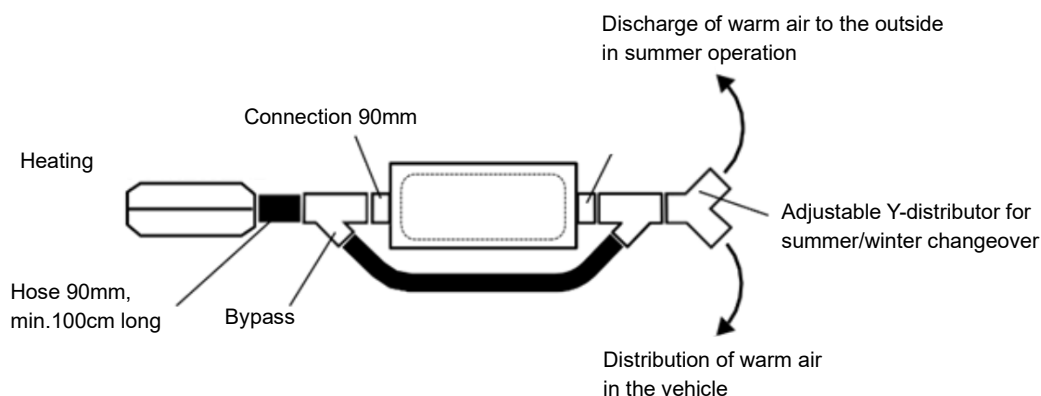
If the boiler is connected electrically and on the water side, the service water pump can be started. Open a hot water tapping point. The boiler is fully filled and vented when water comes out of the hot water tap. Do not turn on the electric heater without first filling it with water.

7.5 Electric heating function

The primary heat source is the built-in electric heating element (or 2 heating rods) in which a thermostat is built-in. When the operating temperature is reached, the heating switches off and automatically switches on again when it cools down accordingly.

7.6 Water heating via parking heater

The AIR and AIR&FLOW boilers can be heated with the usual air heaters, e.g. Autoterm. During installation, suitable materials and fasteners should be used for this purpose, and appropriate distances should be maintained, such as a minimum distance of 1 m between the heat source (parking heater) and the boiler using a bypass as shown in the diagram below.



7.7 Heating by means of engine coolant

The FLOW and AIR&FLOW boilers can be heated with the vehicle's engine coolant. During installation, it is necessary to use materials and fasteners suitable for this purpose, which can withstand the temperature and pressure of the vehicle's cooling system. Below is a diagram of a typical installation.

7.8 EMPTYING THE BOILER

If the boiler is not used for a long time (e.g. winter break), or if the boiler could be exposed to frost, the boiler should be emptied. The boiler should only be emptied after it has been cooled down and disconnected from the mains. It is emptied via the optionally available drain valve or the safety valve. To do this, turn the safety valve until you notice that the water is escaping. If the safety valve "snaps over", turn again until just before this point. Hold this position until the boiler is empty.

During emptying, you should open any tap, otherwise a vacuum will be created that prevents emptying.



WARNING

If the temperature drops below 0°C and the water freezes, irreversible damage to the boiler can occur. Frost damage is not a reason for complaint.

8 Accessories

The boiler installation can be extended with accessories that are www.pundmann.de available on our website <http://www.pundmann.de/>.

In addition to additional mounting material, temperature sensors, installation accessories, etc., it is possible to change or replace the electric heater, safety valve, drain valve or insulation itself.



9 Guarantee

Two-year manufacturer's warranty, calculated from the time of delivery. Any damage caused by freezing or calcification of the boiler, as well as other damage caused by modifications to the device and operating errors, for example, are excluded from the manufacturer's liability. Replacement of the heater or insulation by the user is acceptable in justified cases and does not end the warranty period. In the event of a defect, a complaint must be filed immediately, supplemented by the necessary documents, such as proof of purchase, etc.

Karchowice den 02.05.2025

A handwritten signature in blue ink, reading "Jan-Felix Nagel", is shown on a white rectangular background.

Jan-Felix Nagel
Managing Director and Owner