
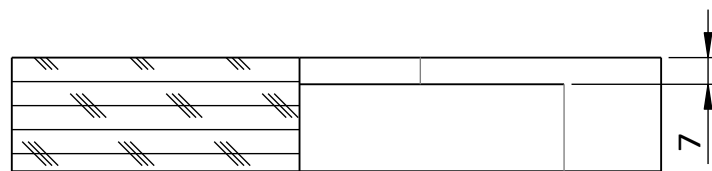


The content of this document is purely indicative. We reserve the right to make technical changes to the product at any time and without prior notice.

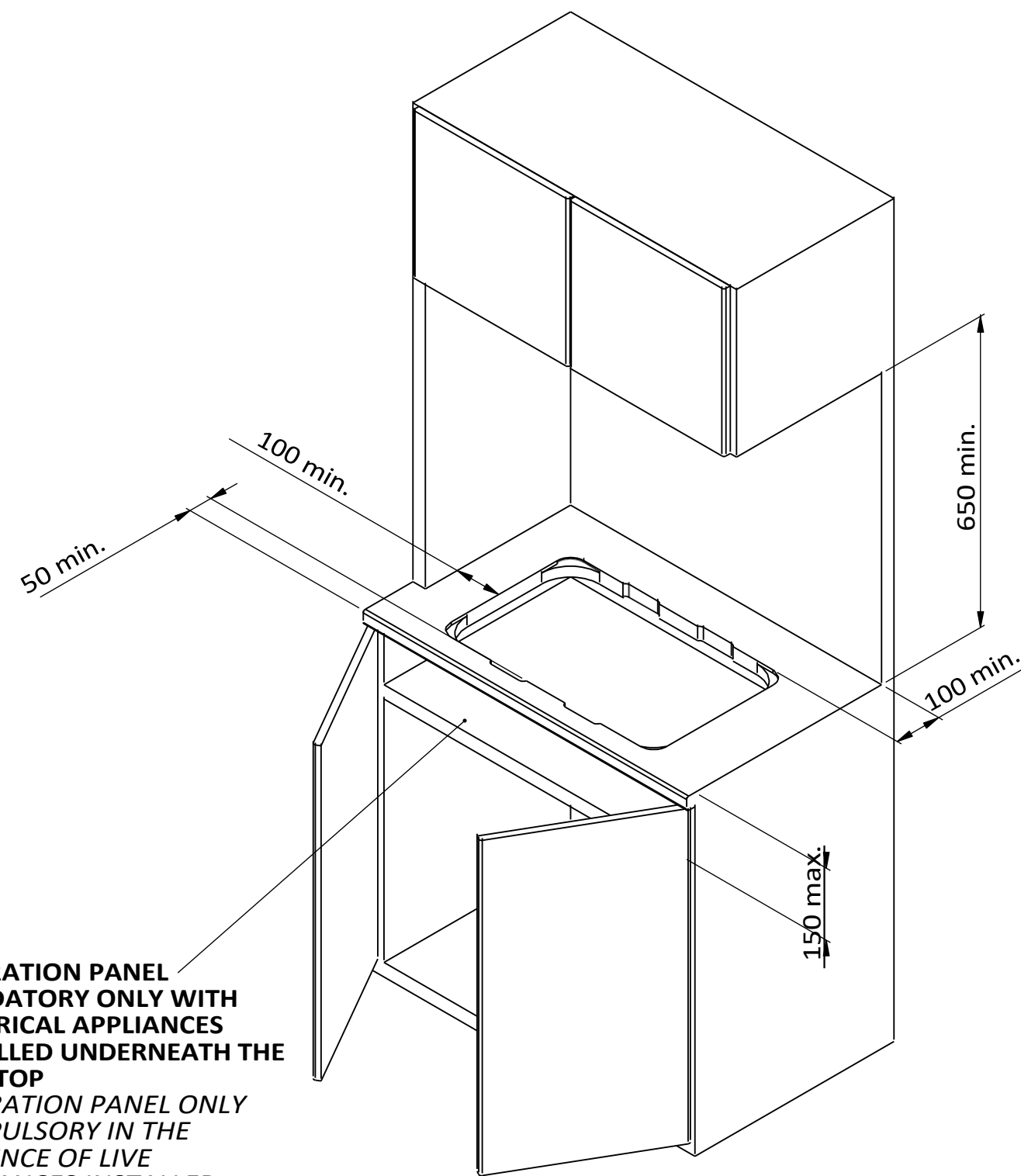
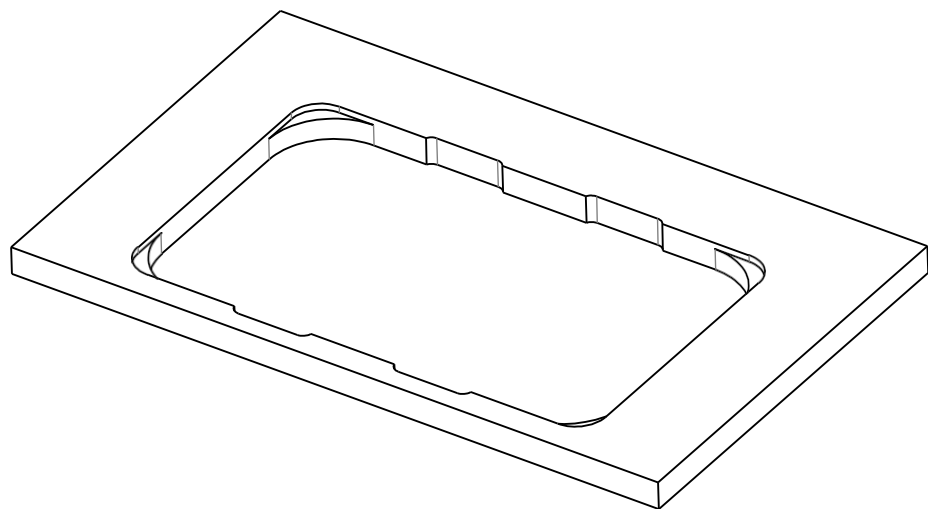
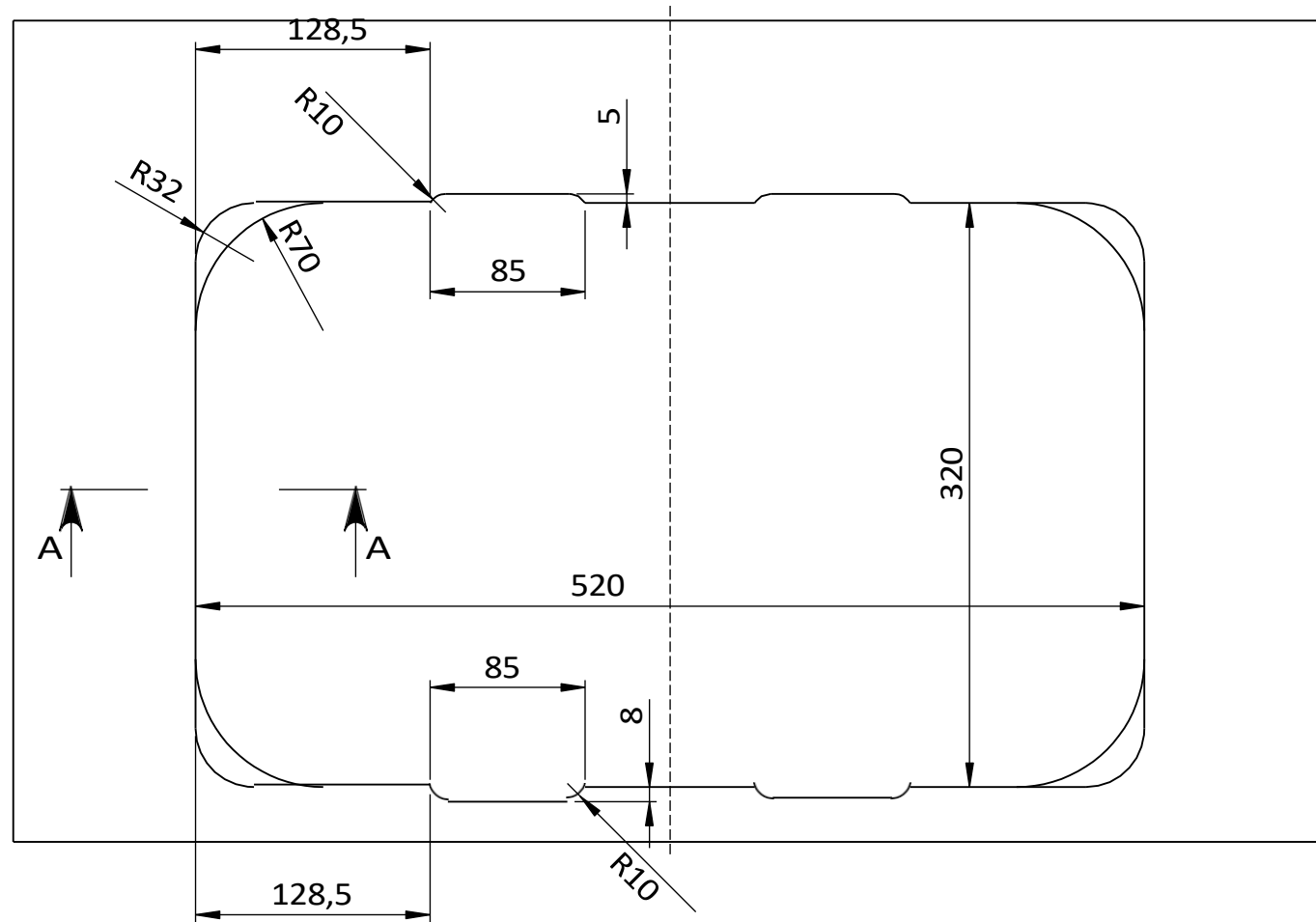
This document is purely indicative. We reserve the right to modify the product, at any moment and without notice of any technical changes.

 www.cansrl.com	Material:	Date-Date: 06/05/2021	A3 1 / 2	
	Treatment:	Dimensions in mm.	Weight Kg:	3.94
	Finishing:	Dimensions in mm.	Article number:	FC1336-P-FP
Description: P/C GAS RETT INC CMD SX-2F A+SR-1VTR-PIEZO-C/FP		Article:		
Description: BT/IN LPG RECT C/TOP KNB LH-2BR A+SR-1LID-PIEZO-W/PH		FC1336-P-FP		

All rights are strictly reserved. Any form of use and/or reproduction without authorisation from CAN S.r.l. is prohibited. All rights are strictly reserved. Any form off reproduction or issue is forbidden without permission of CAN S.r.l.




SECTION A-A
SCALE 1 : 2



SEPARATION PANEL MANDATORY ONLY WITH ELECTRICAL APPLIANCES INSTALLED UNDERNEATH THE COOKTOP
SEPARATION PANEL ONLY COMPULSORY IN THE PRESENCE OF LIVE APPLIANCES INSTALLED BELOW THE HOB

The content of this document is purely indicative. We reserve the right to make technical changes to the product at any time and without prior notice.

This document is purely indicative. We reserve the right to modify the product, at any moment and without notice of any technical changes.

 www.cansrl.com	Material:	Date-Date: 06/05/2021	A3 2 / 2
	Treatment:	Dimensions in mm.	Weight Kg: 3.94
	Finishing:	Dimension in mm.	Article number:
Description: P/C GAS RETT INC CMD SX-2F A+SR-1VTR-PIEZO-C/FP		Article: FC1336-P-FP	

All rights are strictly reserved. Any form of use and/or reproduction without authorisation from CAN S.r.l. is prohibited. All rights are strictly reserved. Any form off reproduction or issue is forbidden without permission of CAN S.r.l.